

Colouring the
imagination





Dalsouple since 1946



Leading Manufacturers of Natural Rubber Flooring. Luxury hard wearing, eco-sensitive and designer focused tiles for a contemporary look and feel.

Colours, colours and even more colours..

"I would like the prairies coloured red and the trees printed blue". Charles Baudelaire

Dreaming of a specific colour? You choose it and we'll create it for you.

Dalsouple ranges are available in an incomparable range of 80 contemporary colours. If you are still unable to find your heart's desire, Dalsouple offers an unlimited range of colours among internationally recognised colour standards - Pantone, Ral, NCS and Dulux. These are available in all of our designs: smooth, textured, marbled and terrazzo..



Welcome to DRF (France) Limited

DRF (France) Ltd are the Exclusive UK Distributors of Dalsouple Rubber Flooring.

It is DRF (France) Ltd's aim to help create a harmonious relationship between a building and the immediate environment. We strive to be eco-conscious in everything we do.

We are fully committed to reducing our carbon footprint - Recycling paper, bottles, office equipment, use of recycled equipment, printing and packaging. Use of superior quality products that are also environmentally resourced i.e. FSC plywood and wooden equipment.

Orders will come straight from the Manufacturer, Dalsouple; delivered direct to our clients/site. This will dramatically reduce transportation costs both economic and environmental, i.e. vehicle emissions, re-packaging and time. Spot checks will be carried out at random to ensure the highest quality is being reached. Please refer to the 10 year guarantee which reflects our assurance of the quality of the range.

UniSmooth

The UniSmooth collection is a smooth surfaced solid-color floor covering.

Available in an infinite range of colors, it responds to conventional requirements while allowing the specifiers imagination to run wild.

thicknesses

- 1.5 mm
- 2 mm
- 2.5 mm
- 3 mm
- 4 mm
-

tile dimensions

- 341 × 341 mm
- 341 × 682 mm
- 682 × 682 mm
- 1,760 × 680 mm
- 610 × 610 mm
- custom sizes also available

colours

80 standard colours or your own custom colour

Also available in the Dalsouple® Ecodurable* range (made from natural rubber)

Please Note: The Ecodurable option may have a slighted marbled appearance





Restaurant Georges – Centre Pompidou, Paris (floor, walls, ceiling)

Marbré

Dalsouple® puts a new twist on marbled floor coverings. The Marbré range gives your floor the authentic appearance of Marble at a fraction of the cost.

thicknesses, smooth surface

- 1.5 mm
- 2 mm
- 2.5 mm
- 3 mm
- 4 mm

micro-reliefs thicknesses

- 2.5 mm
- 3 mm
- 4 mm

tile dimensions

- 341 × 341 mm
 - 341 × 682 mm
 - 1760 × 680 mm
 - 610 × 610 mm
- custom cutting services available

colors

14 assorted combinations or your custom marble effect floor covering from the 80 standard colors available
available in the Dalsouple® Ecodurable* range



Terrazzo

Terrazzo is originally the marble used in Venetian palaces. It has become a classic design for floor coverings. Dalsouple® enables you to create your own Terrazzo by playing with 6 terrazzo patterns, different densities and an infinite selection of colors.

thicknesses

- 1.5 mm
- 2 mm
- 2.5 mm
- 3 mm
- 4 mm

tile dimensions

- 341 × 341 mm
- 341 × 682 mm
- 1,760 × 680 mm
- 610 × 610 mm

colors

80 standard colors or your custom colour
available with a smooth finish,
in the Micro-Reliefs collection

designs

Mini Terrazzo, Terrazzo line, Terrazzo triangle, Terrazzo mini triangle, Terrazzo mixed, Terrazzo logo
available in the Magnetic version





Reliefs

The Reliefs collection has a range of 25 textured surface finishes for an even richer creation.

Design thicknesses

- 2.5 mm
- 3.5 mm

available in the Granite version
(8 assorted colors)

Classic thicknesses

- 2.5 mm
- 3.5 mm
- 4 mm

available in the Granite version
(8 assorted colors)

tile dimensions

- 682 x 682 mm
- 610 x 610 mm

the frequency of certain designs
decreases based on the size
of the tiles

custom cutting services available

colours

80 standard colors or your custom
colour

other custom reliefs are possible:
consult us

**available in the Dalsouple® Ecodurable*
range
and the Magnetic version**

Classic



Rainurée



Terra



Sigma 5



Quadra



Gamma



Metro



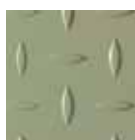
Delta



Hêta



Mini Alpha



Sigma 1



Oméga



Alpha

Design



Ardoise Française



Ardoise Italienne



Petit Pavé



Epsilon



Mini Pavé



Granita



Maya



Cotto



Digitopolis



Fossile



Marina



Grand Pavé

Granit



Fusain



Platine



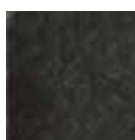
Perle



Zinc



Basalte



Roche



Cobalt



Topaze



Écailles

Micro-reliefs

Moulded onto the floor covering's surface, the micro-reliefs provide a unique and tactile design.

The collection reflects the characteristics of the UniSmooth collection, while offering 7 different types of micro-reliefs.

thicknesses

- 2.5 mm
- 3 mm
- 4 mm

tile dimensions

- 1760×680 mm
 - 610×610 mm
- custom cutting services available

colours

80 standard colors or your custom colour
available in Uni, Marbré or Terrazzo version.

available in the Dalsouple®
Ecodurable range



Workshop, Lyon

Martelé



Cannelé



Petit cannelé



Petit carré



Micro pastille



Petit losange



Pointe de diamant



Martelé

Removable collection

The Dalsouple® Removable collection is particularly suitable for trade shows, exhibitions, or other temporary events in sporting or industrial venues with high traffic. The tiles are simply interlocked together without adhesive, and thus can be easily installed and disassembled.

3 ranges are available:

- DalSport
- DalKit
- DalEquipe



DalSport

The slightly textured, anti-slip surface, along with the heavy duty design make them a perfect match for heavy traffic applications

thickness

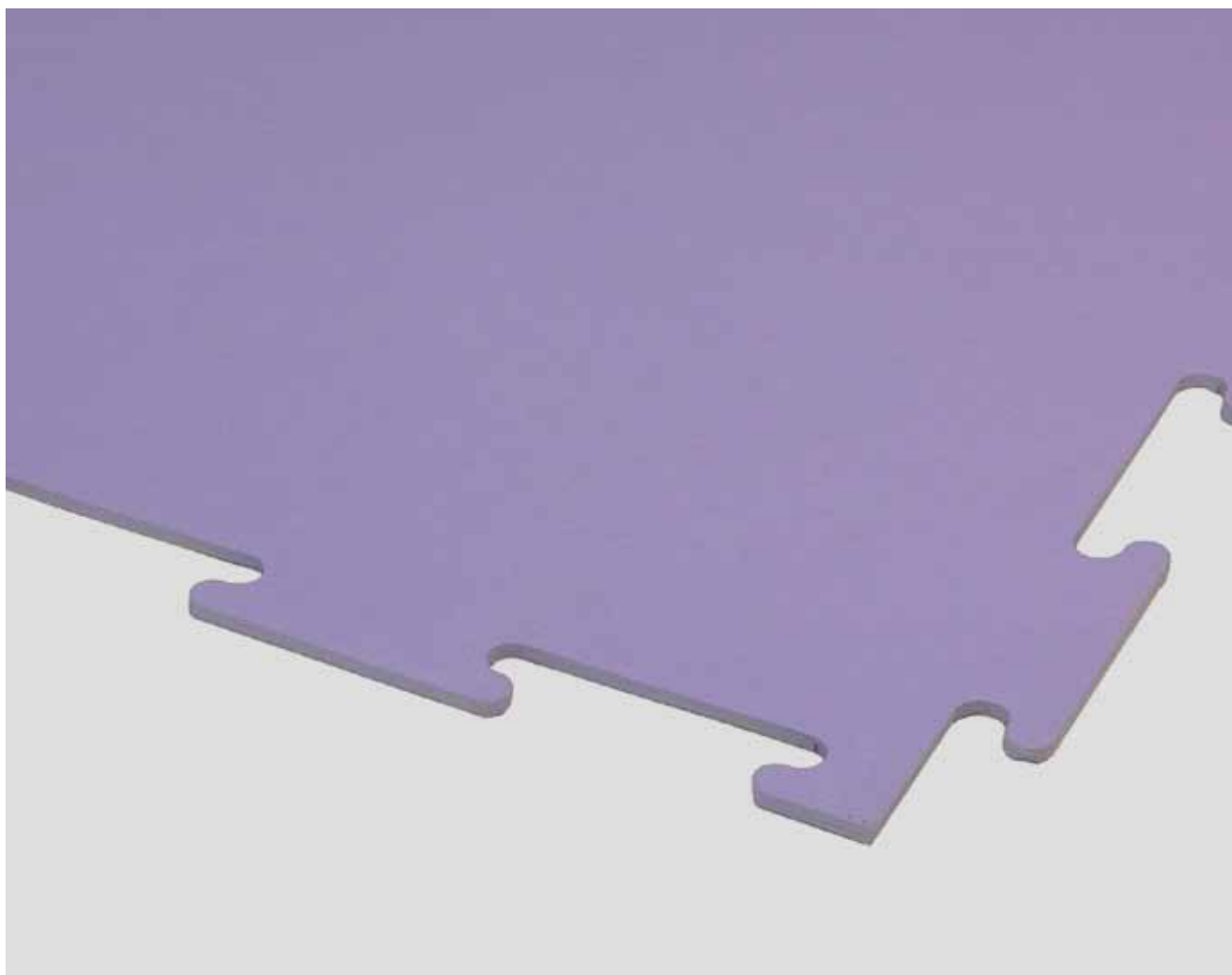
7 mm

tile dimensions

— 603×603 mm

colours

80 standard colors or your custom colour (to be chosen from among one of the international standards RAL, Pantone®, NCS, Chevallier, etc.)





Dalkit

Dalkit tiles feature an anti-slip surface, ideal for stage floors, expositions, receptions, and showrooms. For outdoor installations, the raised base facilitates drainage on damp ground.

thickness on blocks

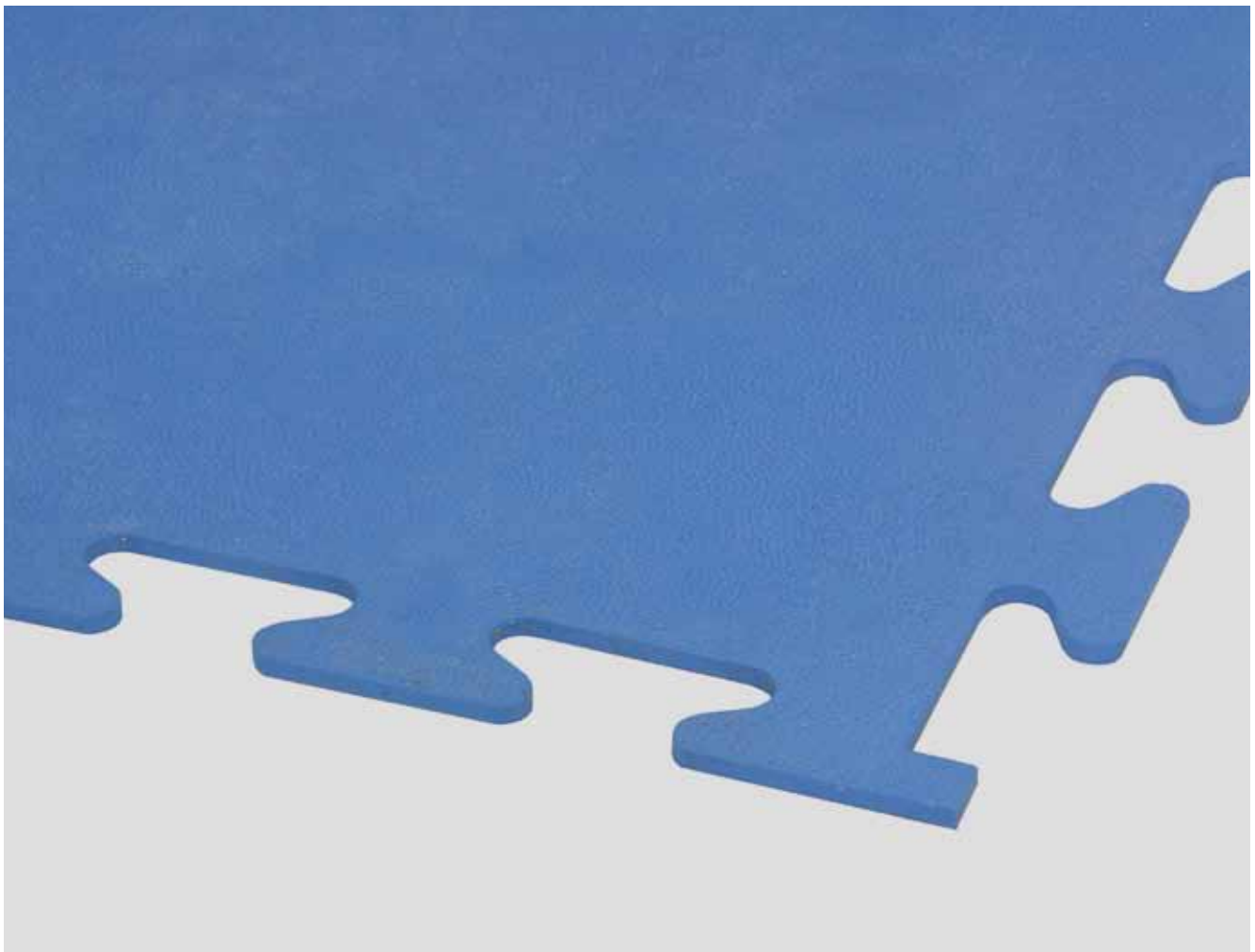
10 mm

tile dimensions

— 666 × 666 mm

colours

80 standard colors or your custom color (to be chosen, from among one of the international standards RAL, Pantone®, NCS, Chevallier, etc.)



DalEquipe

Crafted from a combination of Recycled and Natural rubber Dalsouple® has created DalEquipe tiles, which are as sustainable as they are resistant.

thicknesses

- 4 mm
- 5 mm
- 6 mm
- 7 mm

tile dimensions

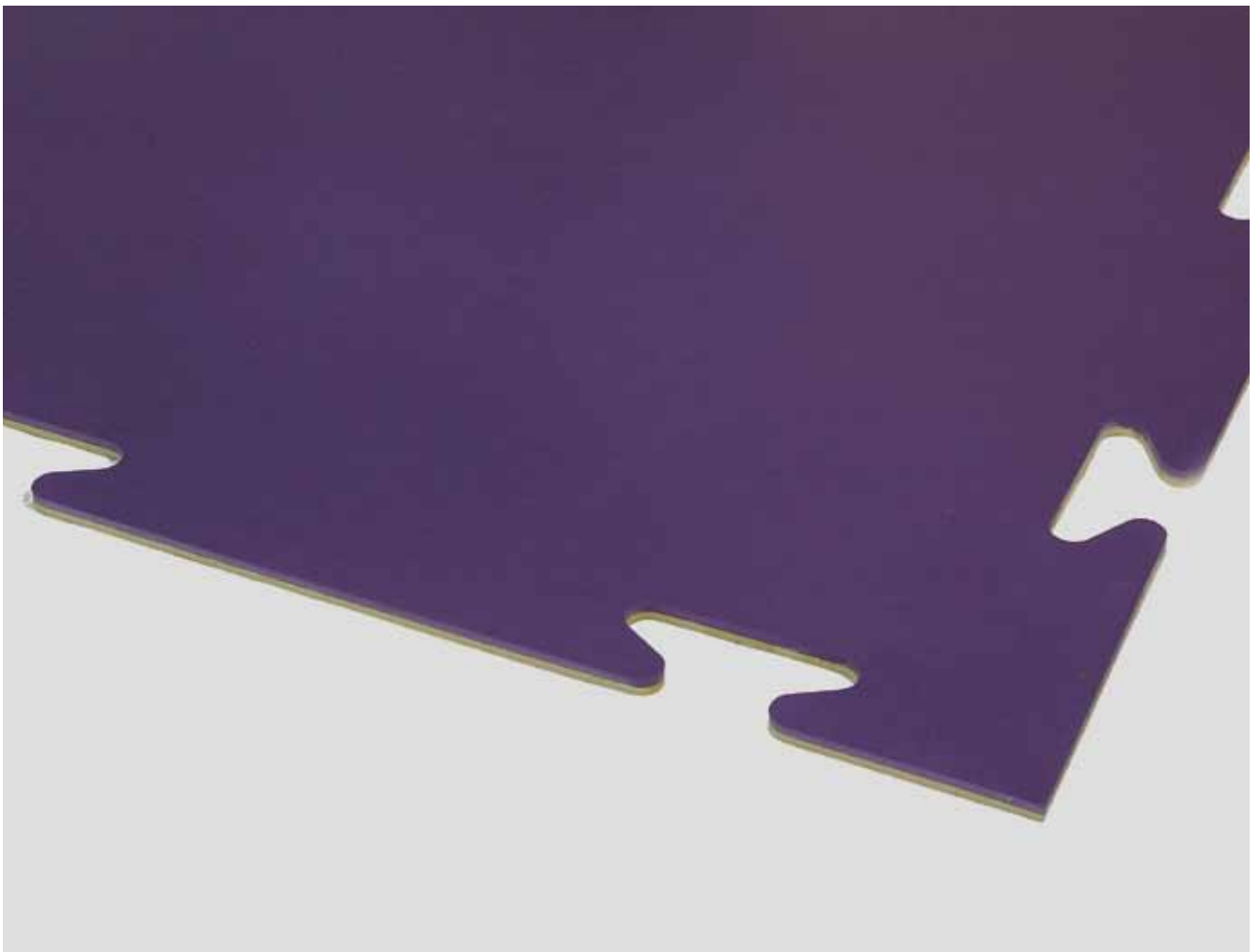
- 817 × 587 mm

colours

80 standard colors or your own custom colour

available with a smooth finish (Uni, Marbré, Terrazzo) and in the Micro-Reliefs collection

available in the Dalsouple®
Ecodurable range



Did you know?

95% of the Dalsouple range is available in Natural Rubber. Not only is this a much better option for the environment and your project's BREAM rating it is also a far superior product in terms of strength, elasticity and stability.

Why choose Natural Rubber?

- Rapidly renewable raw material. Hevea Brasiliensis Rubber Trees live for around 30 years, during which time they continuously produce latex.
- Ethically sourced from well managed Rubber Plantations, adding to the countries economy and benefiting the wellbeing and lifestyles of the local communities.
- Excellent naturally occurring properties including strength, elasticity, resistance to change in temperature, impermeable to gases, resistant to heat, electricity, chemical action and abrasion. Also inhibits the build up of friction from heavy traffic
- Stain and damage resistant.
- Long life expectancy of the manufactured product (hence 10 year guarantee)
- Easy to clean and maintain creating a hygienic surface with prolonged life

which in turn reduces the cost of replacement and subsequent waste.

- Something to consider - Of a Buildings life cycle typically only 20% is made up of the construction and a massive 80% is maintenance! By choosing a better product in the first instance will therefore reduce costs and occurrences of refurbishments due to wear and poor quality materials. Planning for the future is detrimental in creating the most sustainable, eco-conscious building that will last and look great for many years. Renewal of flooring is not only expensive but is also disruptive for business and the people who use the building.
- Due to the naturally dense surface No PVC coatings are required - creating a much healthier internal environment which is easier to clean and less susceptible to dirt. Additional properties include the prevention of unsightly tracks and pathways from regular traffic and helping to create and maintain the building envelope.
- No joint sealing required as the product will not shrink like PVC alternatives. Creating a more uniform look throughout.

- 100% Recyclable, can be reclaimed as fuel as well.
 - The Benefits of Recycling after use are not only environmental but also economic and social:
 - Cheaper to produce than any other type of rubber, including synthetic
 - Some of the existing properties are improved further
 - Requires less energy to produce
 - Excellent way to dispose of unwanted product
 - Conserves non-renewable petroleum used in production of synthetic rubbers
 - Generates work for people in developing countries

We also use the waste rubber from samples in our Equestrian Surfacing.

All Dalsouple products:

- Available in tile format rather than rolls to minimise waste and unnecessary production. An added bonus of using tiles is that these have increased stability and prolong the life of the product further.
- Bespoke Production Plants that only manufacture flooring, making sure the best possible environment and manufacturing procedures specifically being used for the production of their products.

- Dalsouple buy in SBR from sources that comply to highest safety and environmental standards
- Environmentally friendly packaging which includes recycling and using recycled wooden pallets.
- Metallic waste is recycled
- Water is pumped from the ground to cool our machines then returned to the groundwater without any pollution
- Dalsouple work to the highest health & safety standards as well as Strict Environmental standards. Not only do they recycle all waste they also use water from the ground to cool their machines, which is then returned to the ground without any pollution.

Dalsouple products are tested and regulated to the following standards:

COV (CDPH IAQ) and COV (ISO 16000)
 COV G13931C (CDPH IAQ) and COV G13931A
 (ISO 16000)

These reports can be used for Floor score, Gleenguard and LEED projects
 More testing has been carried out according to European Standard EN ISO 16000

Comparable to AgBB, GUT, BLUE ANGEL and CDPH section 01350 but with higher standard requirements

BREAM in Norway

Do you have a specific design in
mind?

We can make it for you!



The UK's Exclusive Distributors of Dalsouple® Products.

DRF (France) Ltd
Freiston Enterprise Park
Priory Road
Freiston
Lincolnshire
PE22 0JZ

Tel: 01205 761779

Fax: 01205 761811

Email: info@drf-france.com

www.drf-france.com

Visit us on [facebook](#) and [twitter](#)

Restaurant Georges – Centre Pompidou, Paris





Restaurant Georges – Centre Pompidou, Paris





Some of our international references

Museum of Modern Art, New York. USA
Massachusetts Institute of Technology (M.I.T.). USA
Dusseldorf “Kunsthalle” Museum of Modern Art. GERMANY
Metropolitan Museum of New York. USA
NATO headquarters meeting room and restaurant (SHAPE). BELGIUM

Heathrow Airport Visitor Centre. London. UK
Los Angeles International Airport. USA
Birmingham International Airport, first floor departure lounge. UK
Heathrow Airport, baggage handling areas. UK
Manchester Airport, Ritazza Café. UK
Goma-Kivu Airport. ZAIRE
Papette Airport. TAHITI
Cairo International Airport. EGYPT
Abidjan International Airport. IVORY COAST
Essen-Mülheim Airport. GERMANY
Atlanta International Airport. USA
Kinshasa Airport. CONGO
Frankfurt International Airport. GERMANY

Arsenal football club, north stand, Highbury. London. UK
Liverpool football club. UK
Wimbledon new centre court. UK

University of London, student union. UK
English National Ballet School. London. UK
University of Strathclyde, student union areas. UK
Faculty of Sciences, Tunis. TUNISIA
Winchester School of Art, student union building. Winchester. UK
Godolphin School. Salisbury. UK
Girls’ college campus. Jersey.
Warwick University, student accommodation areas and internal staircases. UK
University of Wales. UK
Wensfield high school. Wolverhampton. UK
Salford University centenary building, Manchester. UK
John Cabot City Technology College, Bristol. UK

White Chapel west sport centre. London. UK
Alton Towers, Nickelodeon entertainment centre. UK
Grand Prix Racewear, power road. London. UK

Danone Factory, Moscow. RUSSIA

For hundreds of other references, please consult our website
www.dalsouple.fr
www.dalsouple.eu

